

School Holiday Program

Winter 2025

Curtin



Woden Community Service recognises the Ngunnawal people as traditional custodians of the ACT and surrounding region and acknowledges that other people and families also have a traditional connection to the lands of the ACT and region.

We pay our respects to their cultures, ancestors and Elders, past and present.

Monday 7 July 2025

'Elio' - Movie Excursion to Limelight

We're off to the movies to see alien-obsessed Elio's comedic intergalactic misadventure on the big screen. Back in Curtin, we'll make alien puppets and recreate the 'Communiverse' using modelling clay.

Arrive by 9 am sharp. Return by ~1:15 pm.



Tuesday 8 July 2025

Chia Pets and Terracotta Pot Decorating

It's Clay Day! Make a pet using air-drying clay, cover it in chia seeds, let it dry, mist it, and then wait for it to sprout 'fur'. You will receive a terracotta pot to paint and take home. We'll do beading too.

Bring a smock or old shirt: the paint won't wash out.



Wednesday 9 July 2025

Let's Play Indoor Playground Excursion

Too cold to play outdoors? We'll play indoors! Let's Play is having a reptile zoo encounter on the day of our visit too. Outside we'll create reptile murals using giant chalk. We'll make Funny Flower Monsters too.

Arrive by 9 am sharp. Return by 2 pm.



Thursday 10 July 2025

B-B-B: Bags, Bikes and Baking

You'll receive a tote bag to decorate with fabric paint or fabric dye and keep. Bring your bike and/or scooter, and we'll go for a ride in the local neighbourhood. We'll bake something yummy.

We'll have a frozen treat with afternoon tea.



Friday 11 July 2025

'The Lego Movie' PG 2014 – Excursion

This animated kid-culture mash-up will be screened at 1:00 pm at the ARC Cinema at the National Film and Sound Archive. Before we leave, we'll make three-dimensional animal art.

Arrive by 11:15 am sharp. Return by ~3:15 pm.



Monday 14 July 2025

'Smurfs' 2025 Excursion + Silent Disco

It's Smurfette and the Smurfs in the real world. Return to a Silent Disco, we provide the headphones. You choose the music. Dance, sing-along, or chill.

Note: Arrive by 9 am sharp. We'll return by approx. 1:45 pm



Tuesday 15 July 2025

Mug Decorating and Key Chains

You will receive a mug to paint and take home. Think about what design you might create. We'll also make key chains and paper lanterns.



Wednesday 16 July 2025

National Archives of Australia Excursion

We are participating in the first-ever NAA OSHC holiday program themed 'All aboard the circus train'. Bring wet weather gear as part of the excursion, which will include time outside, regardless of the weather.

Note: Arrive by 9:00 am sharp. We'll return by 2:45 pm

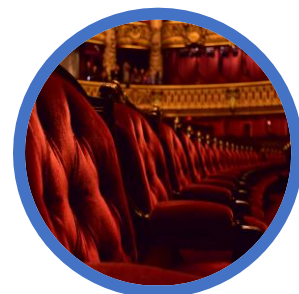


Thursday 17 July 2025

Runt' PG 2024 – Movie Excursion

A National Film and Screen Archives screening of an Australian film about an 11-year-old girl and her incredible dog. Before the movie, we'll make playdough. After we return, we'll do karaoke and sing some classic movie tunes.

Note: Arrive by 11:15 am sharp. We'll return by approx. 3:00 pm



Friday 18 July 2025

Face Painting and Magnet Art

Families beware - at pick-up time, you might not recognise your child! We'll do two types of magnet art: decorate a magnet to take home and create cool artwork using paint and magnets. No brushes are needed; the magnets do the painting.

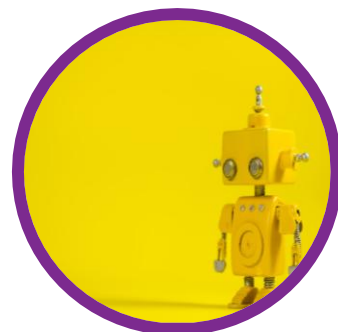
Note: Wear suitable clothes for smudges of face paint.



Monday 21 July 2025**Lego Robotics and Picture Frames**

We'll be borrowing the WCS Lego Robotics Kits for the day. We'll make craft robots with moving parts using cardboard and split pins. We'll make picture frames for photos or artworks. You can make an artwork to put in the frame!

We'll have a frozen treat with afternoon tea.



Notes

- Children must bring warm clothes, closed-toed shoes, and a water bottle.
- Children should bring wet weather gear on excursion days if the forecast suggests a possibility of rain.
- No breakfast, morning tea, or lunch is provided. Morning tea and lunch need to be brought from home. Products containing nuts and seafood are not permitted due to the presence of children with anaphylaxis.
- The service will provide an Afternoon Tea snack.
- Policies and procedures for transporting children and risk management plans for excursions and other activities, where necessary, are in place and available at the service or by request.
- If the schedule of planned activities is amended, families will be informed as soon as possible.
- Please ensure you arrive at the program at least 45 minutes before excursion departure times or earlier if the service requests. Ensure you sign the permission form, which will be available upon arrival.
- There is a possibility that excursions and other activities will be cancelled due to extreme weather. Alternative indoor activities will be provided on such days.
- Provisions contained within the Medical Conditions Policy and Administration of Medication Procedure are strictly adhered to, and compliance with them is a condition of attendance. Ensure all medical and dietary requirements are detailed on the Enrolment Form and action plans are uploaded.