

Curtin OSHC

School Holiday Program

Spring 2025

Week 1

Monday, 29 September 2025

The Bad Guys 2: Movie at Limelight (excursion)

Come and watch as the Bad Guys struggling to find trust and acceptance in their newly minted lives as Good Guys.

Please arrive by 9:00 am sharp. We'll return to the service by 2:00 pm.

Tuesday, 30 September 2025

Mr Squiggle and Friends (excursion)

This exhibition at the National Museum of Australia explores puppetry, cartooning and art, and features Mr Squiggle, Blackboard, Gus the Snail, and Bill Steam Shovel. We'll also have a look around the museum.

Please arrive by 9:00 am sharp. We'll return to the service by 1:30 pm.

Wednesday, 01 October 2025

The Wildflower Stop (excursion)

We're visiting the National Archives of Australia and the exhibition Camel trains to steel wheels: life on the Trans-Australian Railway. We'll create our own watercolour wildflower landscape with help from the Archives educators.

Please arrive by 9:00 am sharp. We'll return to the service by 2:45 pm.

Thursday, 02 October 2025

Dough Day

We'll make playdough. Choose what colour you want to make. We'll also make damper. We'll eat the damper while it is still hot. Yum!

We'll have a frozen treat with afternoon tea.

Friday, 03 October 2025

Tie Die Shirts and Air Drying Clay

Last holiday, the tie-dye tote bags we made looked amazing, so this time we are trying tie-dye t-shirts. We'll also make sculptures using air-drying clay. Bring a smock.

Bring your own white shirt to tie-dye.

Week 2

Monday, 06 October 2025

PUBLIC HOLIDAY

No service will be running today.

Tuesday, 07 October 2025

Kangaroo (PG): Movie at Limelight (excursion)

We will see a heart-warming family comedy about the rescue and rehabilitation of a group of orphaned joeys. Watch the trailer to see if this PG movie is suitable for your child.

Please arrive by 9:00 am sharp. We'll return to the service by 2:00 pm.

Wednesday, 08 October 2025

Face Painting and Modelling Clay

Today is going to be colourful. You can be involved by face-painting your friend. After you've had your face painted, use modelling clay to make a model of your painted self.

We'll have a frozen treat with afternoon tea.

Thursday, 09 October 2025

Let's Play Indoor Playground (excursion)

This was our most popular excursion last holidays so we are doing it again. Remember to bring socks (compulsory for indoor playgrounds) and a water bottle.

Please arrive by 9:00 am sharp. We'll return to the service by 2:00 pm.

Friday, 10 October 2025

Lego Robotics and Herbal Teas

We're borrowing the WCS Lego Robotics Kit for the day. Throughout the day, we'll try different herbal teas. We'll head out into the reserve to do some sketching en plein air.

Bring your best pencils and a clipboard from home.

Reminder: Rollover Period for 2026 Enrolments



Woden Community Service

Check your enrolments between 3rd November – 21st November 2025

Week 3 & Pupil Free Day

Monday, 13 October 2025

Bag Tags and Terracotta Pot Painting

Create your own bag tag to put on your school bag or any bag you choose. Decorate your own terracotta pot to take home. Bring along an old shirt or smock.

We'll have a frozen treat with afternoon tea.

Notes

- Children must bring suitable sun-safe clothes, closed-toed shoes, and a water bottle.
- Children should bring wet weather gear on excursion days if the forecast suggests a possibility of rain.
- No morning tea or lunch is provided. Please bring morning tea and lunch from home. No nuts or seafood are allowed.
- The service will provide an Afternoon Tea snack.
- Policies and procedures for transporting children and risk management plans for excursions and other activities, where necessary, are in place and available at the service.
- If the schedule of planned activities is amended, families will be informed as soon as possible.
- Please ensure you arrive at the program at least 45 minutes before excursion departure times or earlier if the service requests. Ensure you sign the permission form, which will be available upon arrival.
- There is a possibility that excursions and other activities will be cancelled due to extreme weather. Alternative indoor activities will be provided on such days.
- Provisions contained within the Medical Conditions Policy and Administration of Medication Procedure are strictly adhered to, and compliance with them is a condition of attendance.
- Ensure all medical and dietary requirements are detailed on the Enrolment Form and action plans are uploaded.

Contact Us

Curtin OSHC

8:00am - 6:00pm

curtinseniors@wcs.org.au

0472 820 865

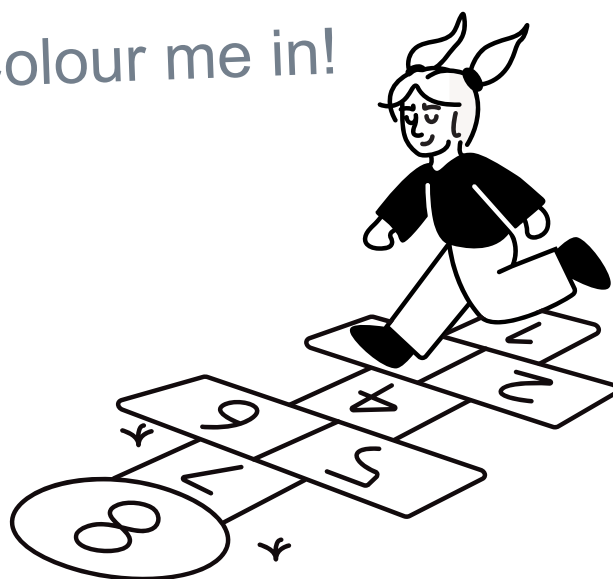
Curtin Primary School, 70 Theodore St,
Curtin ACT 2605

**Book our school
holiday program
today at**

wcs.org.au/holiday-programs



Colour me in!



 **Woden Community Service**

Check your enrolments between 3rd November – 21st November 2025